

WifiHandwritePad Connection Guide

Version 1.1



This Connection Guide shows you how to connect Android™ mobile phone to PC, using the WifiHandwritePad software.

Documents:

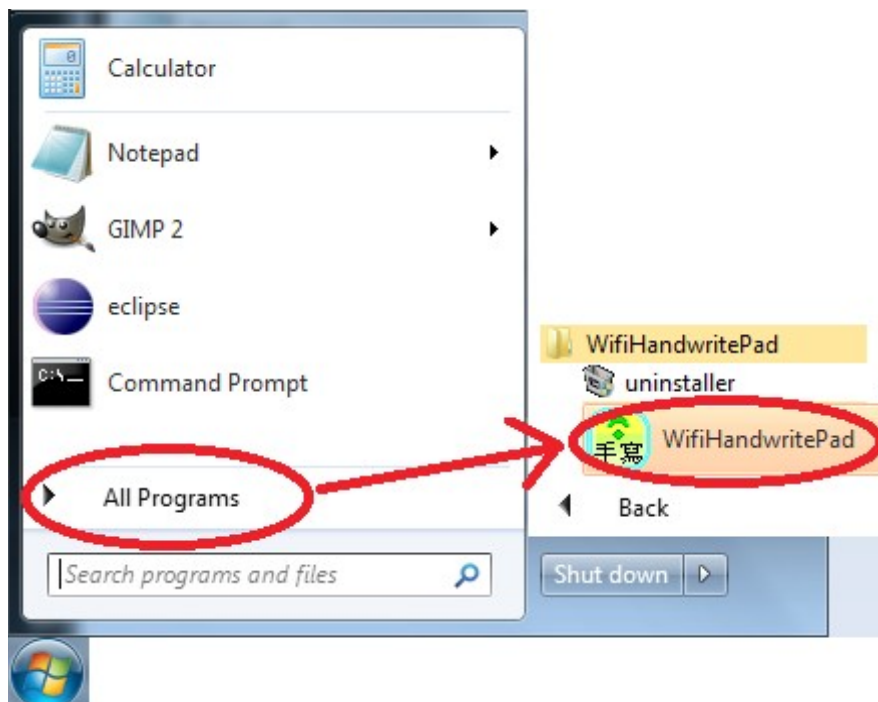
1. For information on PC Software installation, refer to “[PC Installation Guide](#)”.
2. For information on WifiHandwriteFree (or WifiHandwritePro) Apps installation on Android™ mobile phone, refer to <http://market.android.com>.
3. For information on “How To Connect PC and Mobile”, refer to this manual.
4. For information on “How To Use WifiHandwritePad”, refer to “[User Manual](#)”.

Contact information:

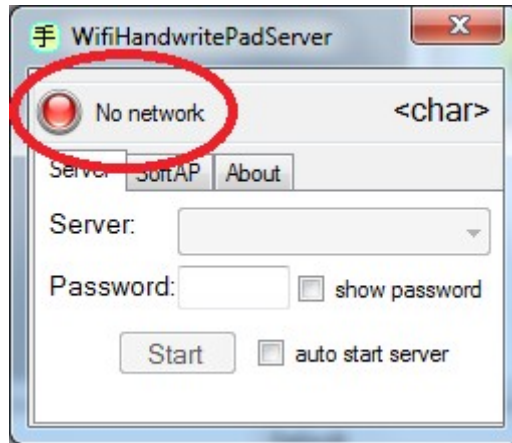
- URL: <http://wifihandwritepad.blogspot.com>
- Contact: teamprof.net@gmail.com

On PC:

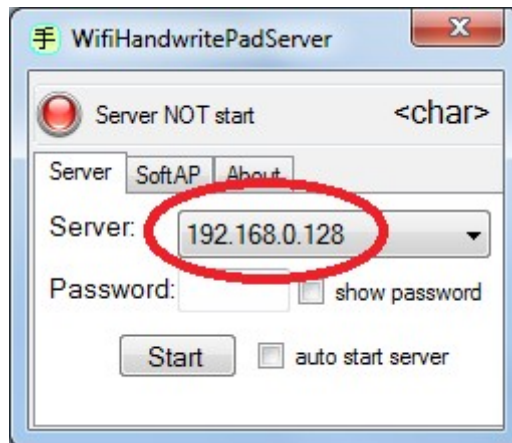
1. Run “WifiHandwritePadServer” by click
“Start” → “All Program” → “WifiHandwritePad” → “WifiHandwritePadServer”



2. If Wifi is off, a red icon and “No network” are shown. You need to turn on Wifi on your PC.



3. Once Wifi is on and an IP is assigned to your PC, WifiHandwritePadServer shows the IP address.

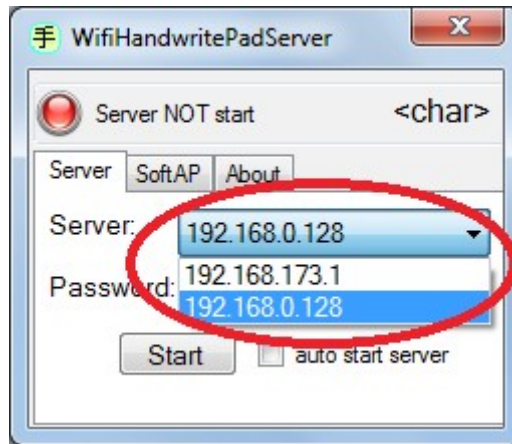


4. Input password (note: password works on WifiHandwritePro only, this function is NOT available for WifiHandwriteFree).

You may see your password by click the “show password” checkbox.



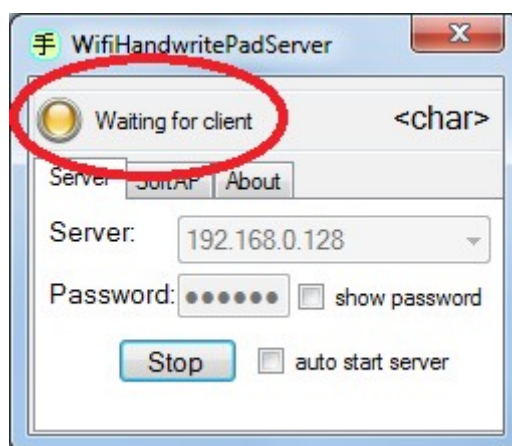
5. If there are more than 1 IPs, you can select IP by clicking the list box.



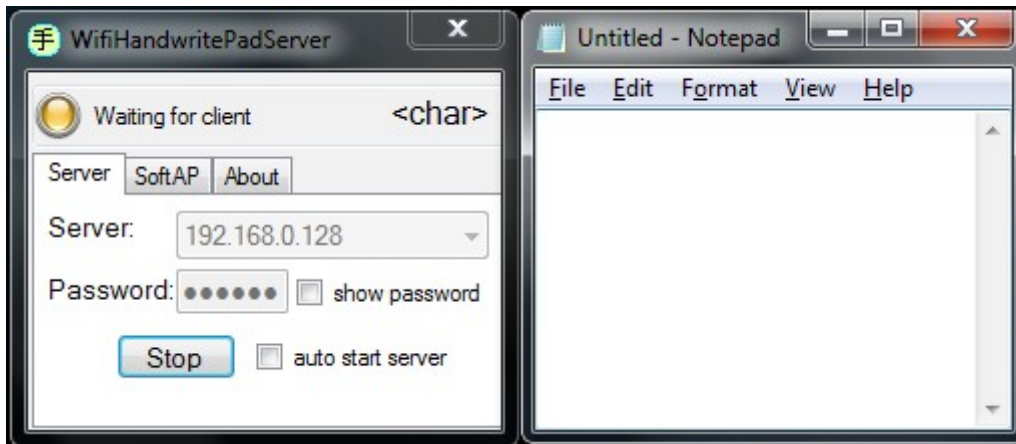
6. Press "Start" button to start server program on PC. You may click "auto start server" checkbox to automatically start server every time WifiHandwritePadServer is run.



7. A yellow icon and "Waiting for client" are shown.



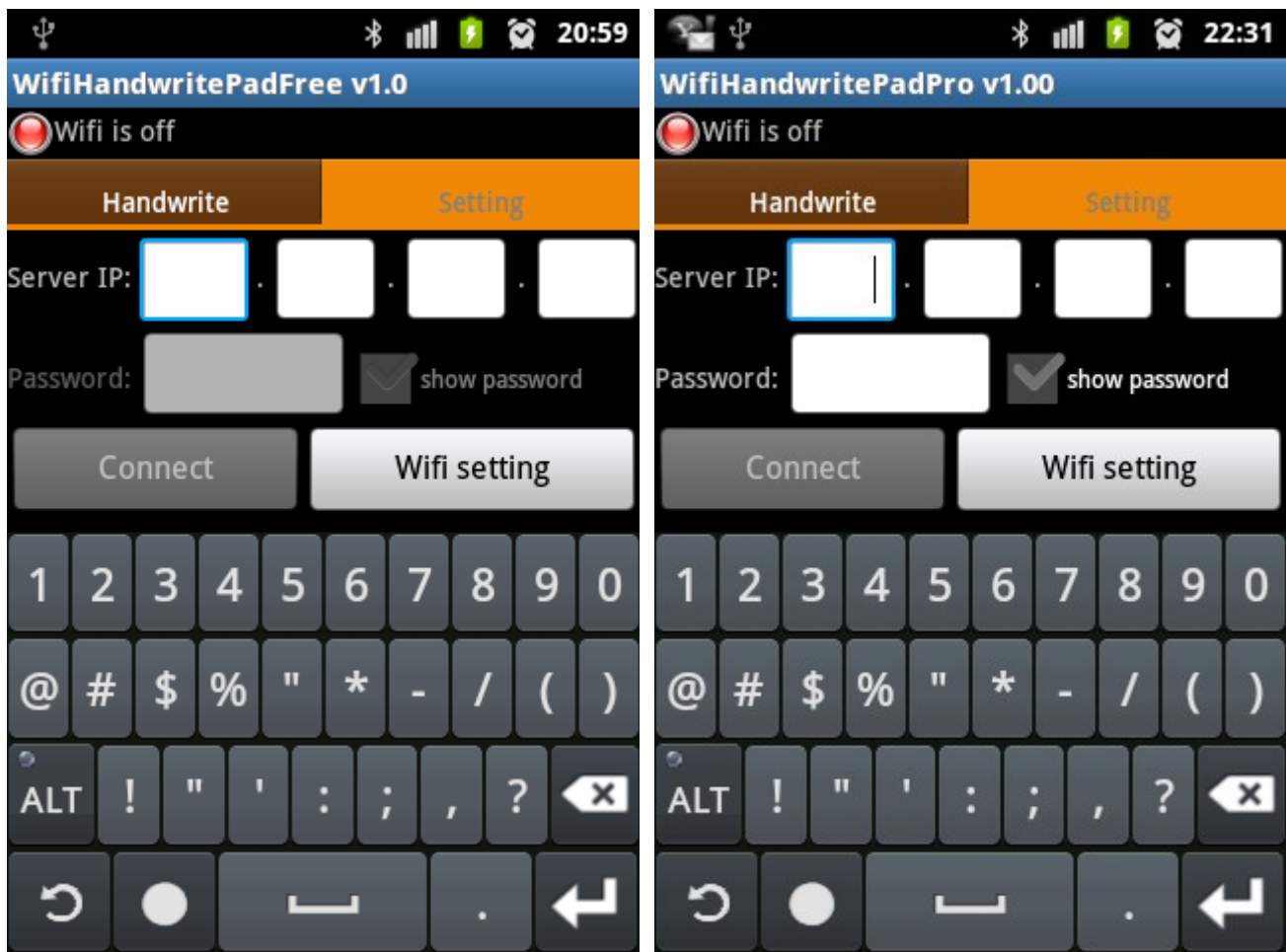
8. Open an application to receive input characters (e.g. Notepad, WordPad, ...). The current focus application on PC will receive the characters.



(Press “Stop” button and change setting if necessary)

On Android™ mobile phone

1. Run the WifiHandwriteFree (or WifiHandwritePro) on your mobile phone.
If Wifi is off, an red icon and “Wifi is off” are shown.



2. Turn on Wifi and connect to the network which your PC is connected (refer to your Android™ phone user manual on how to connect Wifi network).

3. Once the phone is connected to the network. A yellow icon and “Server disconnected!” are shown.

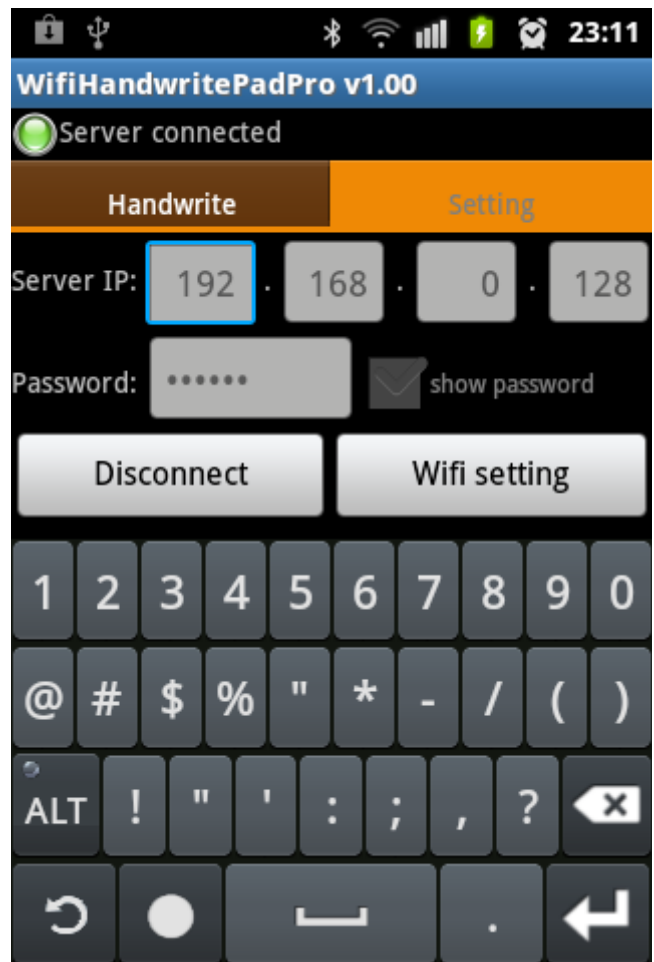
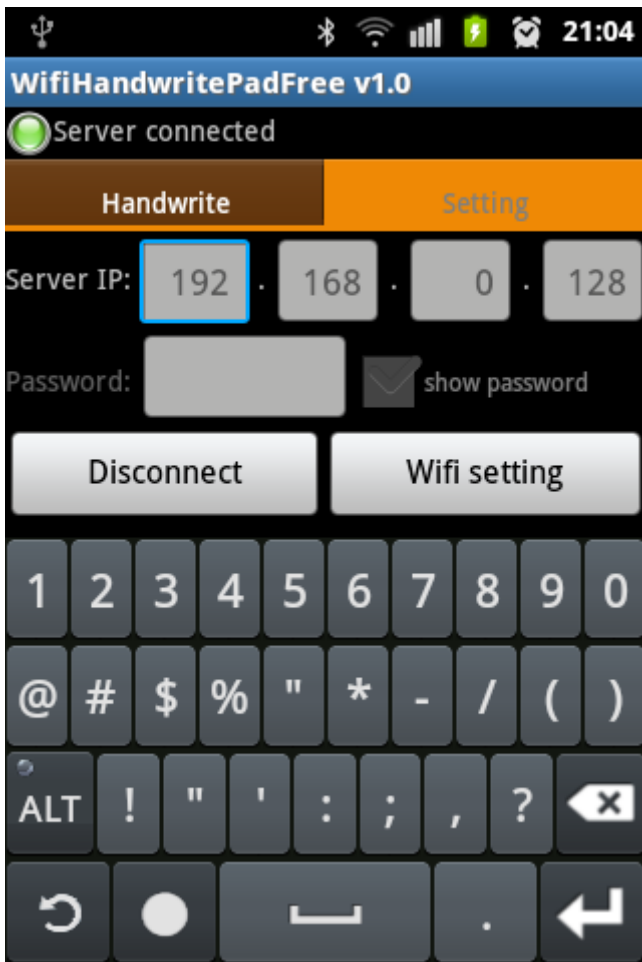


4a. Input Server IP address which is shown on the PC's WifiHandwritePadServer application. (In this example, server IP address is 192.168.0.128).

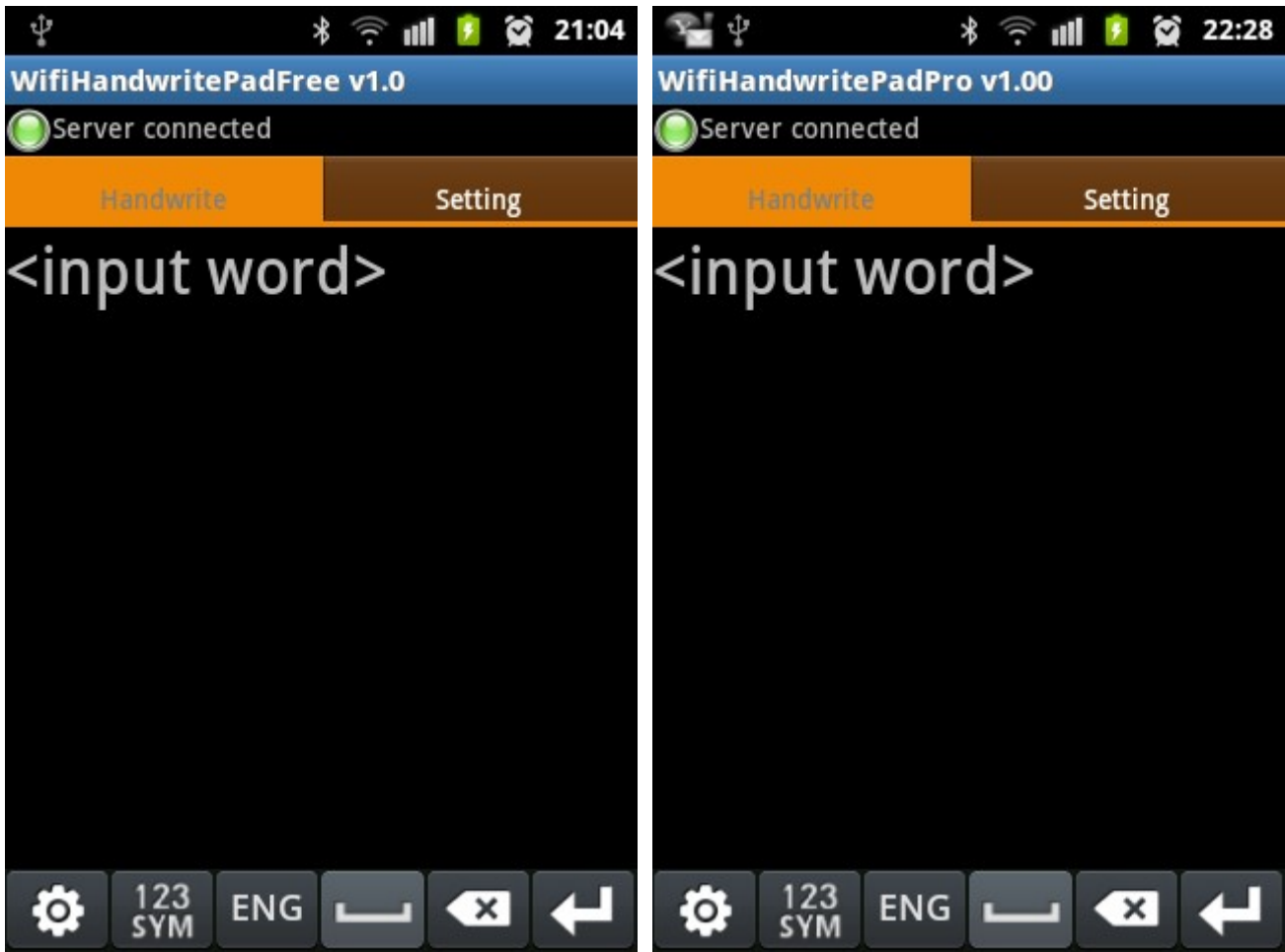
4b. Type the password which is input on the WifiHandwritePadServer application (only Android™ WifiHandwritePro Apps support password function, this function is NOT available for WifiHandwriteFree)

4c. Press “Connect” button to connect to PC server.

(A successful “Setting” screen is for your information)



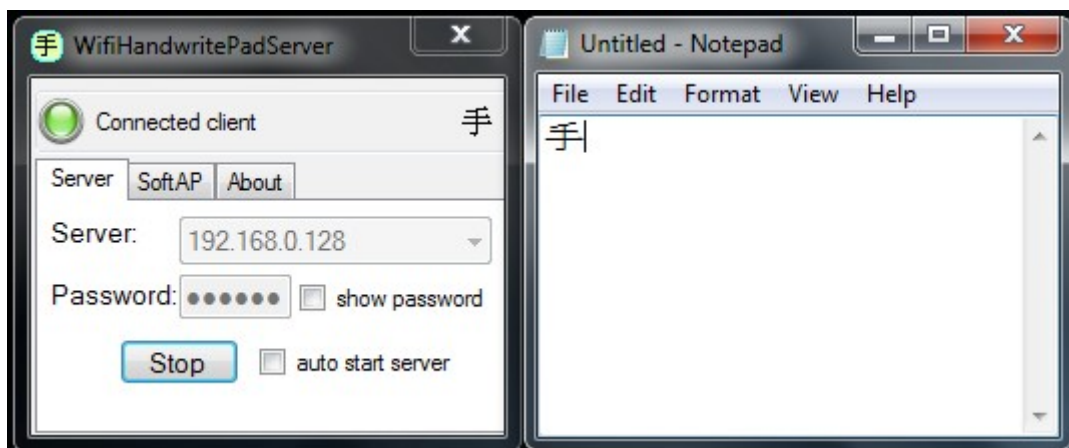
5. If connection is success, a green icon and “Server connected” are shown. The handwrite pad screen will display.



6. Input character on the handwrite pad screen (e.g. 手).



7. Android™ WifiHandwriteFree (or WifiHandwritePro) will send the input character(s) to PC's WifiHandwritePadServer. The WifiHandwritePadServer will send the character(s) to the current focus application on PC (Notepad in this example). PC screen is shown as below:



8. Enjoy WifiHandwritePad by repeating input characters on your phone.